



**F HOUSE**

*Brisas Del Portet*

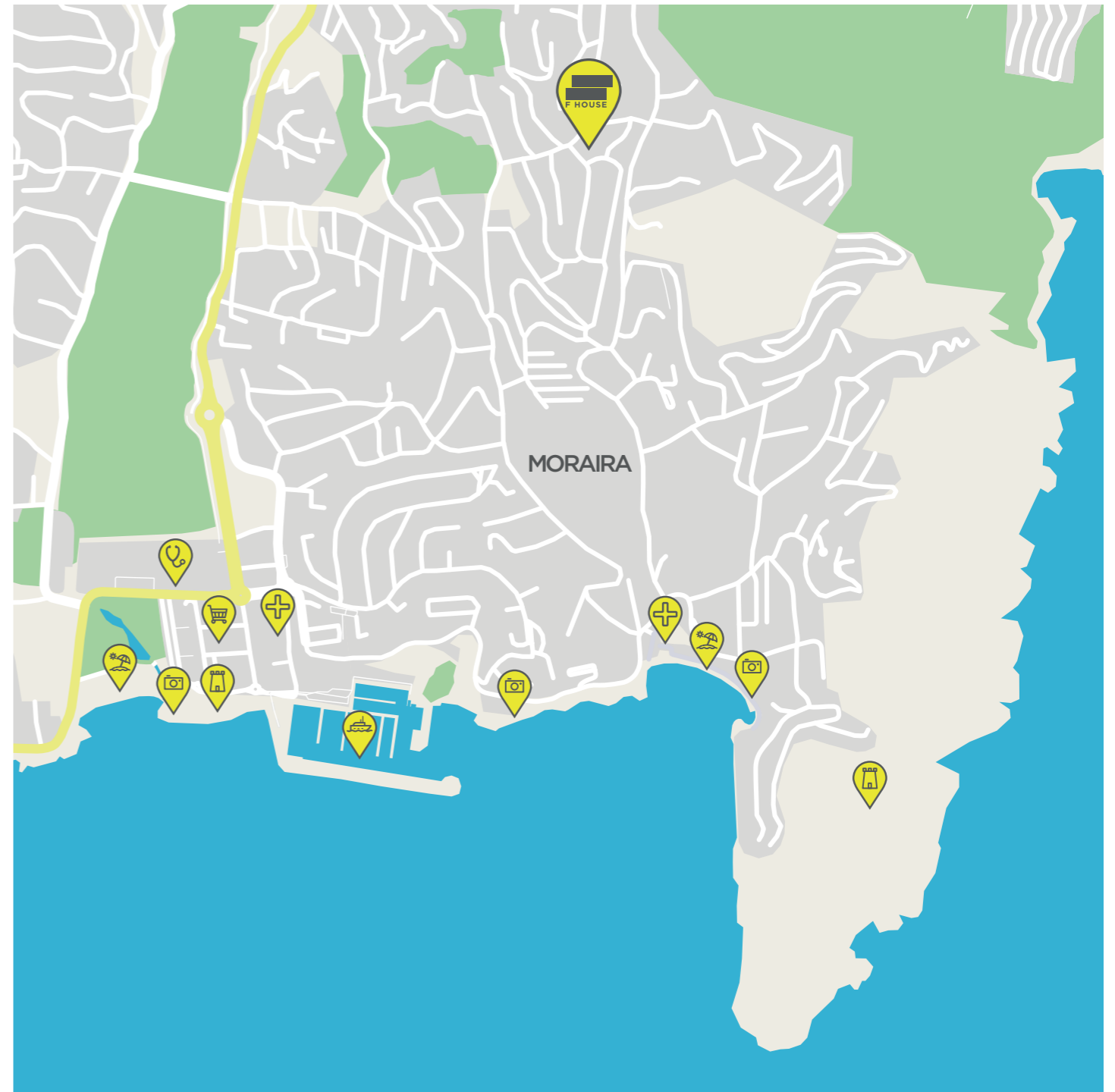
The Costa Blanca is one of the most attractive places in Europe, well known for its beautiful beaches. Micro-climate combined with a fine Mediterranean cuisine, makes it a great place to live.

There are many ways you can relax here. Sunbathing on the various beaches, cruising on a boat, enjoying a wide range of water sports. Play golf, and improve your skills on the many courses in the area. Or just take the car and discover the surrounding picturesque landscapes.

Top class restaurants throughout the area, include those rated with Michelin stars, will provide you with an unforgettable dining experience. In addition to the delicious local cuisine, a full range of dishes from all around the world are available.

The magic, history and culture of the many towns and villages throughout the region fascinate those that visit Costa Blanca.







Modern semi-detached homes create a place for complete relaxation and happiness.

These elegant and unique two-level properties are located in the area of El Portet, renowned for its paradisiacal beach and turquoise sea.

Open space and light filled interiors include: three bedrooms, parking spaces, garden, BBQ area, private swimming pool and terraces.







The interiors are finished in white tones of grey and beige, combined with Mediterranean colours.

A second bathroom is shared between the two guest bedrooms.

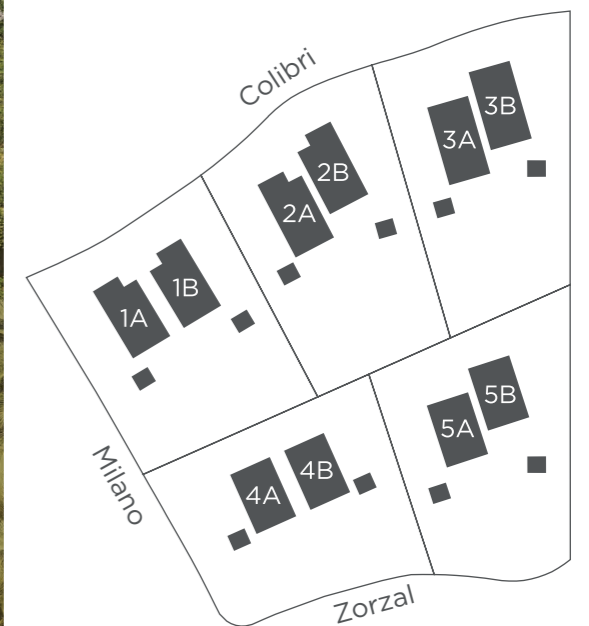


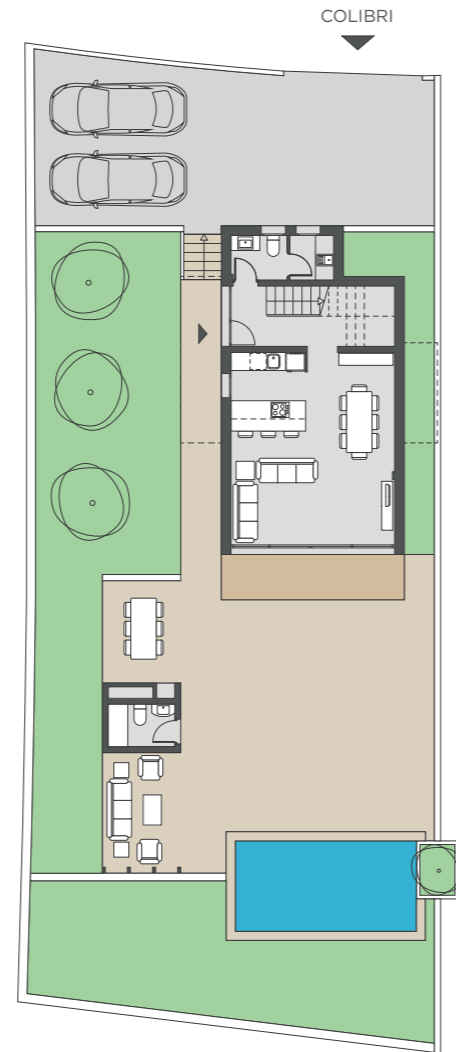




Elegant villas set in a beautiful valley of El Portet. Bright and modern designed homes, fully equipped with the finest quality of fixtures and fittings.

Life is for living!  
Come and join us in Paradise.

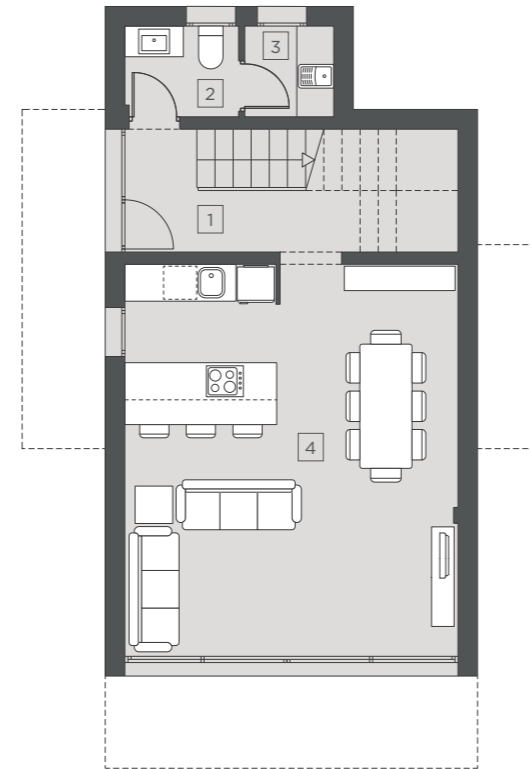




**PLOT 1A**

PLOT AREA	434,00 m <sup>2</sup>
PAVED AREAS	59,87 m <sup>2</sup>
PARKING AREA	66,17 m <sup>2</sup>
GARDEN AREAS	162,30 m <sup>2</sup>
GROUND FLOOR	82,79 m <sup>2</sup>
FIRST FLOOR	76,23 m <sup>2</sup>
BBQ / PERGOLA	26,00 m <sup>2</sup>
SWIMMING POOL AREA	18,00 m <sup>2</sup>
POOL MEASUREMENTS	6x3 m

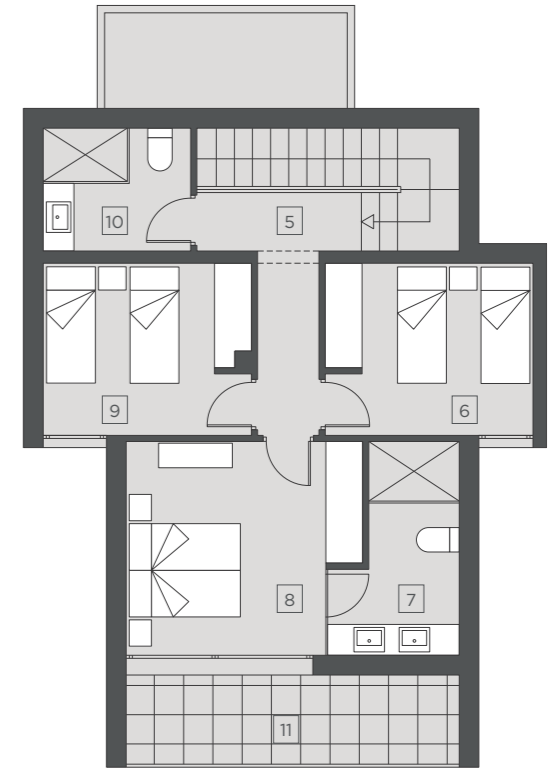
0 1 5 10m



**GROUND FLOOR**

- 1 ENTRANCE HALL
- 2 VISITORS TOILET
- 3 UTILITY ROOM
- 4 KITCHEN - LOUNGE - DINING AREA

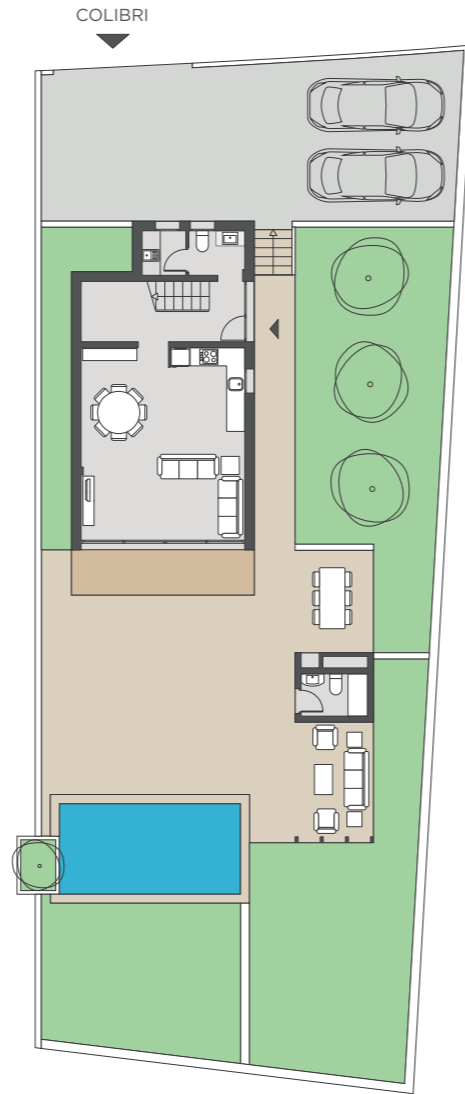
0 1 5m



**FIRST FLOOR**

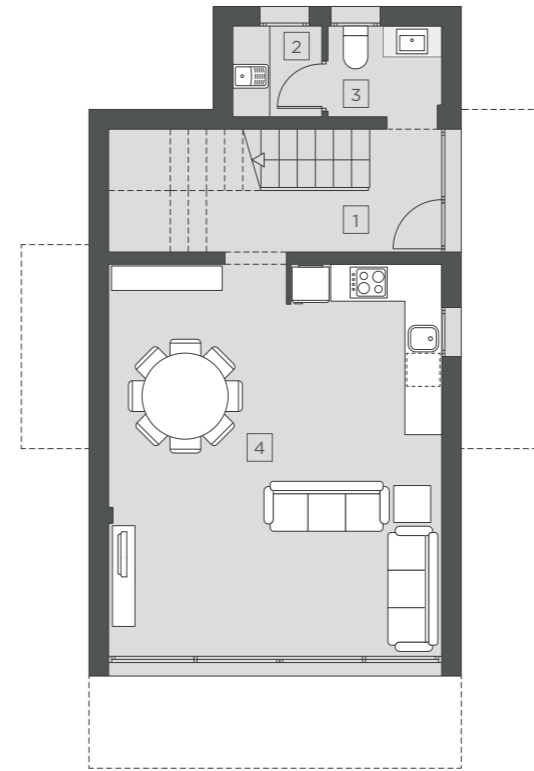
- 5 HALL
- 6 BEDROOM 1
- 7 MAIN BATHROOM
- 8 MAIN BEDROOM
- 9 BEDROOM 2
- 10 BATHROOM
- 11 TERRACE





PLOT 1B	
PLOT AREA	443,00 m <sup>2</sup>
PAVED AREAS	61,75 m <sup>2</sup>
PARKING AREA	70,83 m <sup>2</sup>
GARDEN AREAS	117,87 m <sup>2</sup>
GROUND FLOOR	82,79 m <sup>2</sup>
FIRST FLOOR	76,23 m <sup>2</sup>
BBQ / PERGOLA	26,00 m <sup>2</sup>
SWIMMING POOL AREA	18,00 m <sup>2</sup>
POOL MEASUREMENTS	6x3 m

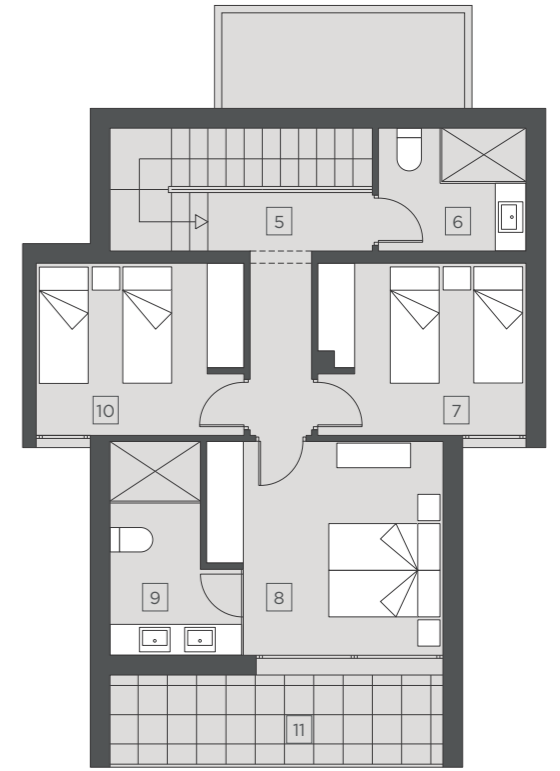
0 1 5 10m



**GROUND FLOOR**

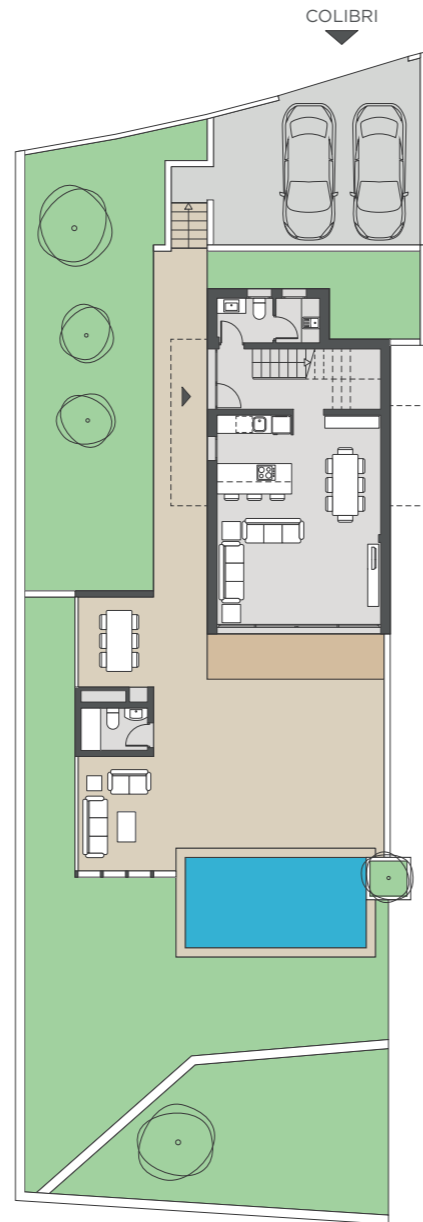
- 1 ENTRANCE HALL
- 2 UTILITY ROOM
- 3 VISITORS TOILET
- 4 KITCHEN - LOUNGE - DINING AREA

0 1 5m



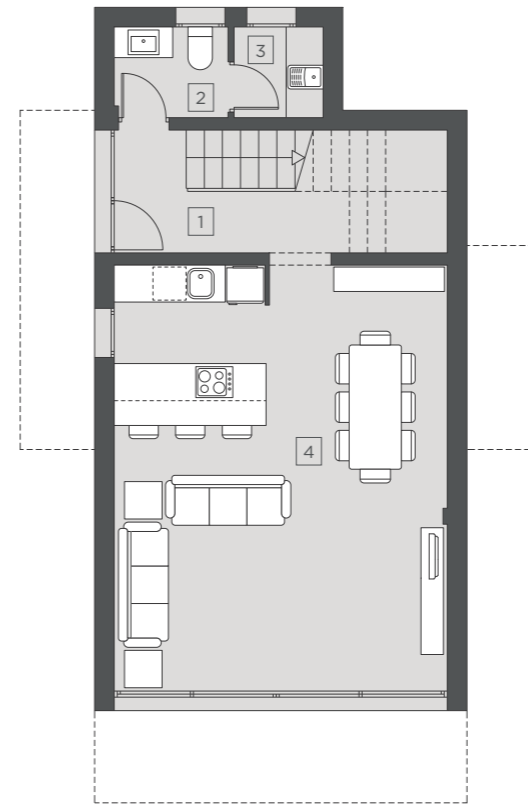
**FIRST FLOOR**

- 5 HALL
- 6 BATHROOM
- 7 BEDROOM 1
- 8 MAIN BEDROOM
- 9 MAIN BATHROOM
- 10 BEDROOM 2
- 11 TERRACE



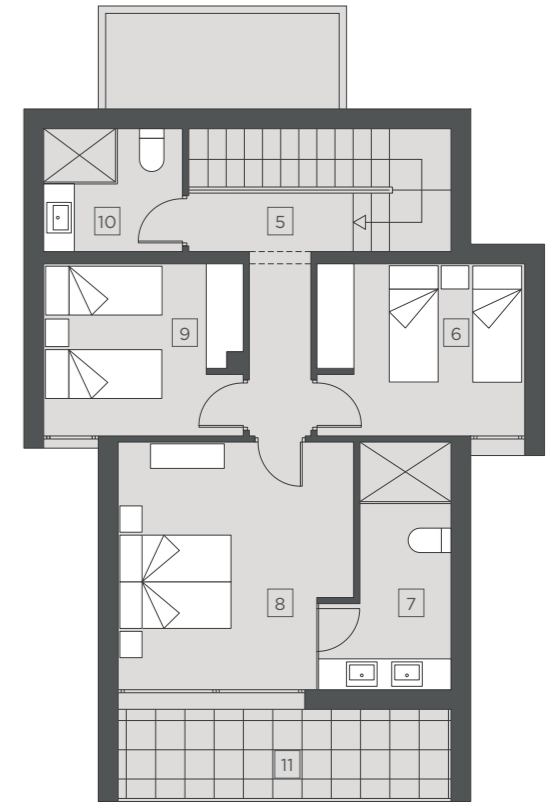
**PLOT 2A**

PLOT AREA	448,00 m <sup>2</sup>
PAVED AREAS	61,82 m <sup>2</sup>
PARKING AREA	37,28 m <sup>2</sup>
GARDEN AREAS	189,00 m <sup>2</sup>
GROUND FLOOR	85,01 m <sup>2</sup>
FIRST FLOOR	78,24 m <sup>2</sup>
BBQ / PERGOLA	26,00 m <sup>2</sup>
SWIMMING POOL AREA	18,00 m <sup>2</sup>
POOL MEASUREMENTS	6x3 m



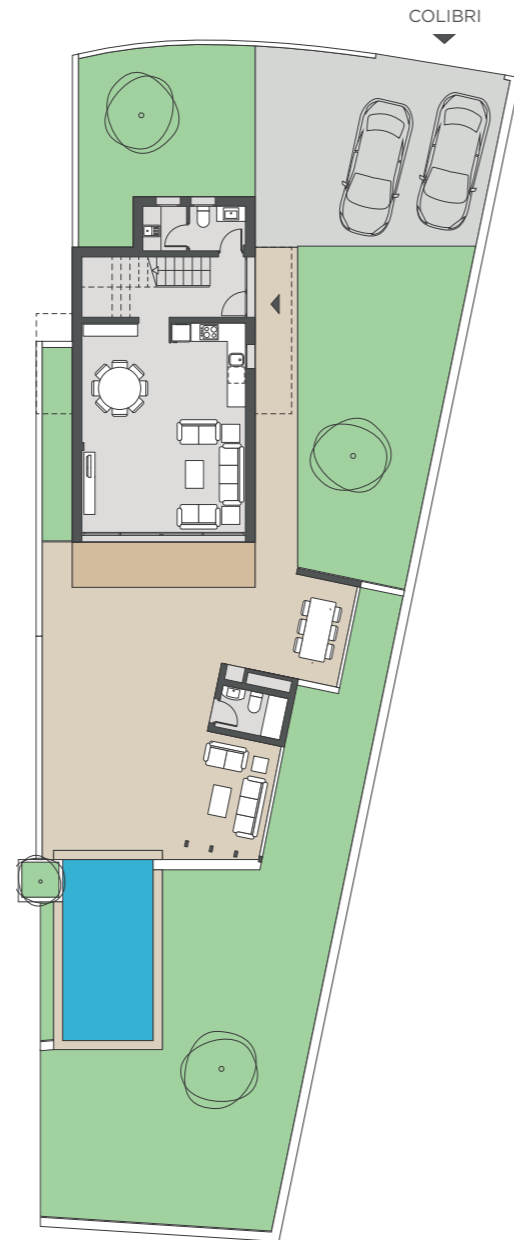
**GROUND FLOOR**

- 1 ENTRANCE HALL
- 2 VISITORS TOILET
- 3 UTILITY ROOM
- 4 KITCHEN - LOUNGE - DINING AREA



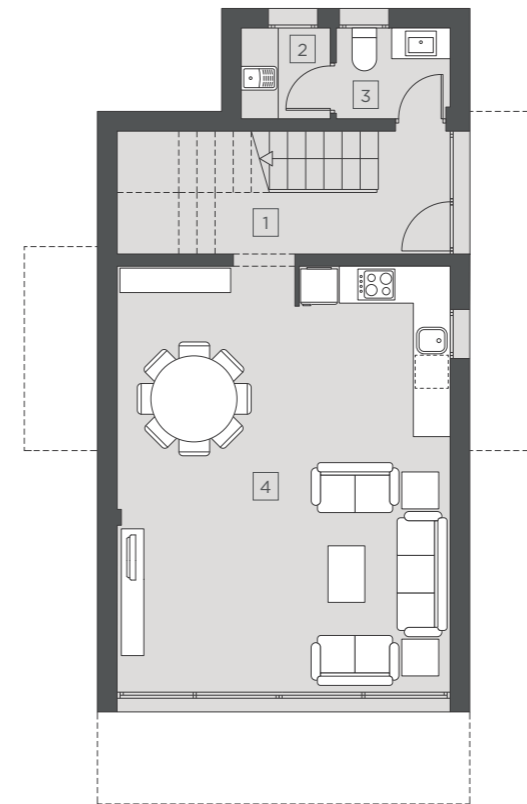
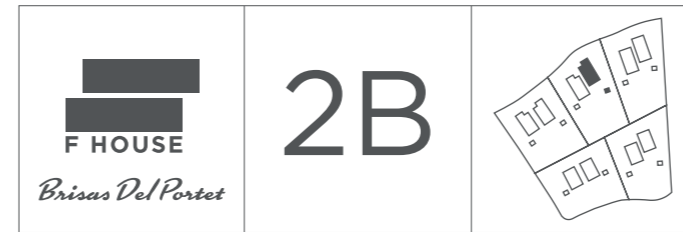
**FIRST FLOOR**

- 5 HALL
- 6 BEDROOM 1
- 7 MAIN BATHROOM
- 8 MAIN BEDROOM
- 9 BEDROOM 2
- 10 BATHROOM
- 11 TERRACE



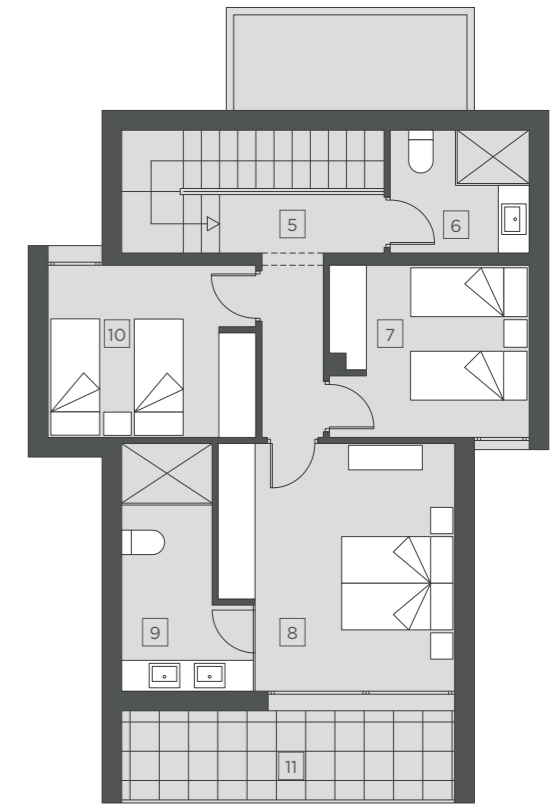
**PLOT 2B**

PLOT AREA	459,00 m <sup>2</sup>
PAVED AREAS	68,11 m <sup>2</sup>
PARKING AREA	49,05 m <sup>2</sup>
GARDEN AREAS	192,14 m <sup>2</sup>
GROUND FLOOR	85,01 m <sup>2</sup>
FIRST FLOOR	78,24 m <sup>2</sup>
BBQ / PERGOLA	26,00 m <sup>2</sup>
SWIMMING POOL AREA	18,00 m <sup>2</sup>
POOL MEASUREMENTS	6x3 m



**GROUND FLOOR**

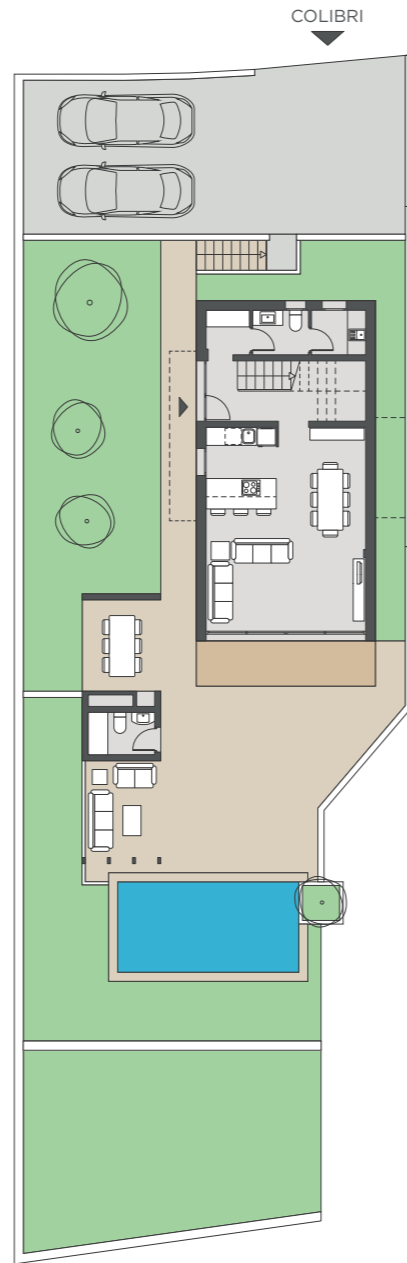
- 1 ENTRANCE HALL
- 2 UTILITY ROOM
- 3 VISITORS TOILET
- 4 KITCHEN - LOUNGE - DINING AREA



**FIRST FLOOR**

- 5 HALL
- 6 BATHROOM
- 7 BEDROOM 1
- 8 MAIN BEDROOM
- 9 MAIN BATHROOM
- 10 BEDROOM 2
- 11 TERRACE

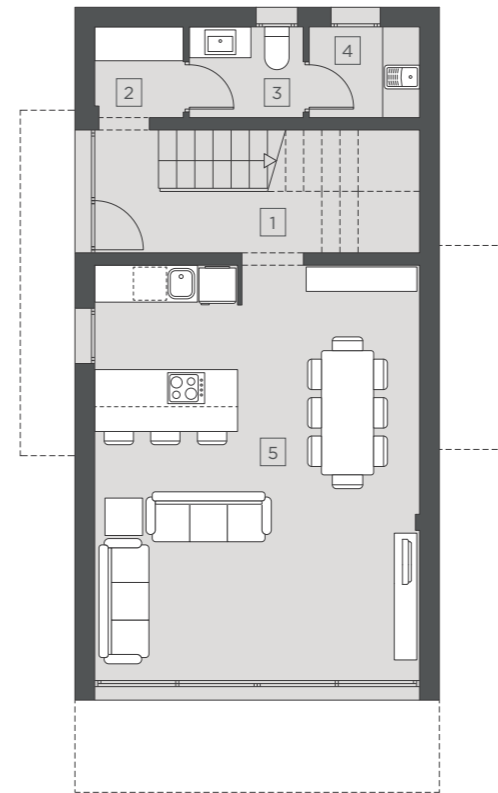




**PLOT 3A**

PLOT AREA	449,00 m <sup>2</sup>
PAVED AREAS	60,46 m <sup>2</sup>
PARKING AREA	60,03 m <sup>2</sup>
GARDEN AREAS	146,24 m <sup>2</sup>
GROUND FLOOR	83,85 m <sup>2</sup>
FIRST FLOOR	74,01 m <sup>2</sup>
BBQ / PERGOLA	26,00 m <sup>2</sup>
SWIMMING POOL AREA	18,00 m <sup>2</sup>
POOL MEASUREMENTS	6x3 m

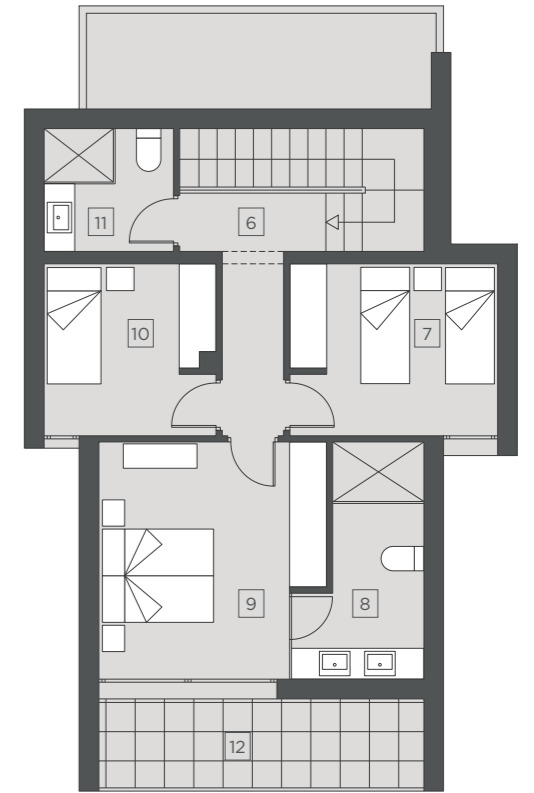
0 1 5 10m



**GROUND FLOOR**

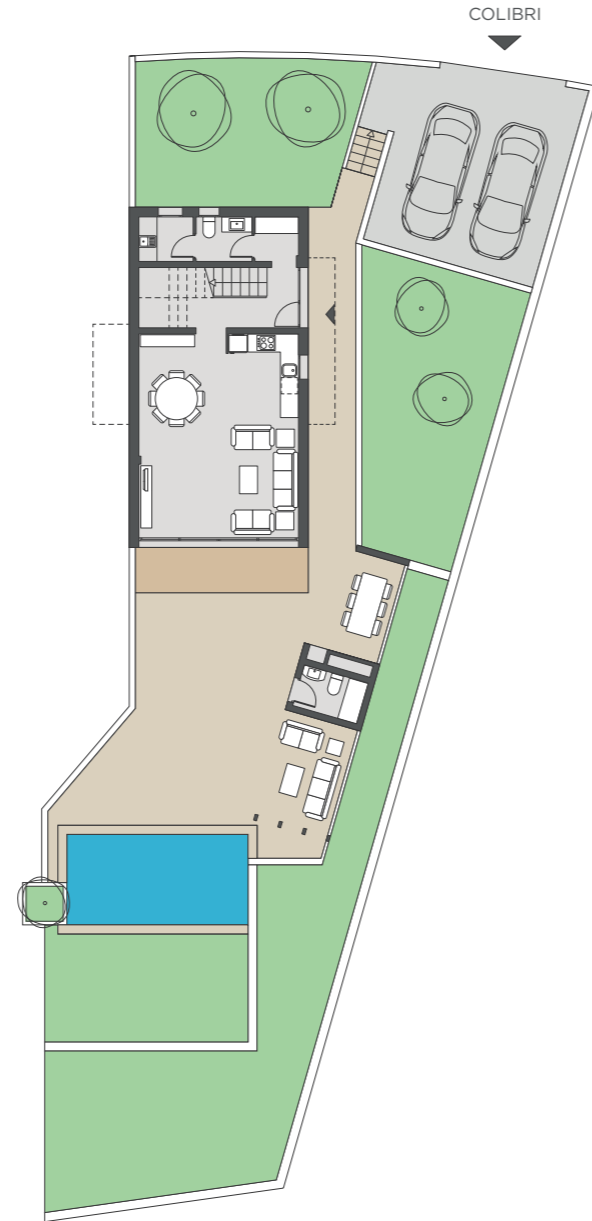
- 1 ENTRANCE HALL
- 2 WARDROBE
- 3 VISITORS TOILET
- 4 UTILITY ROOM
- 5 KITCHEN - LOUNGE - DINING AREA

0 1 5m



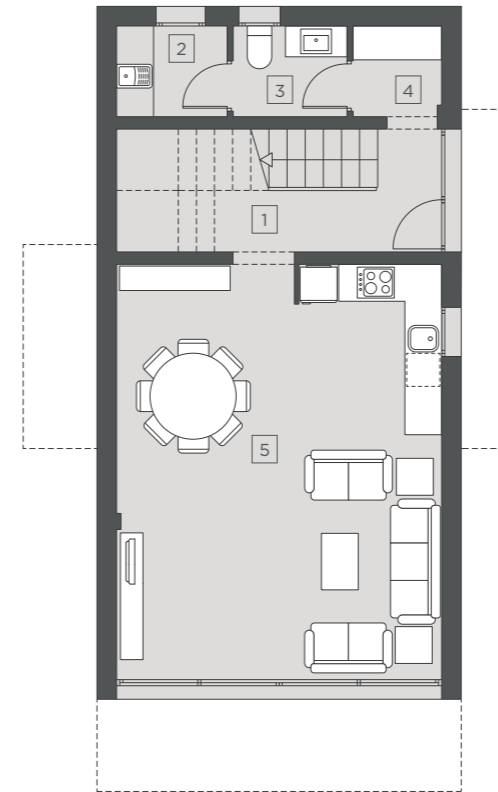
**FIRST FLOOR**

- 6 HALL
- 7 BEDROOM 1
- 8 MAIN BATHROOM
- 9 MAIN BEDROOM
- 10 BEDROOM 2
- 11 BATHROOM
- 12 TERRACE



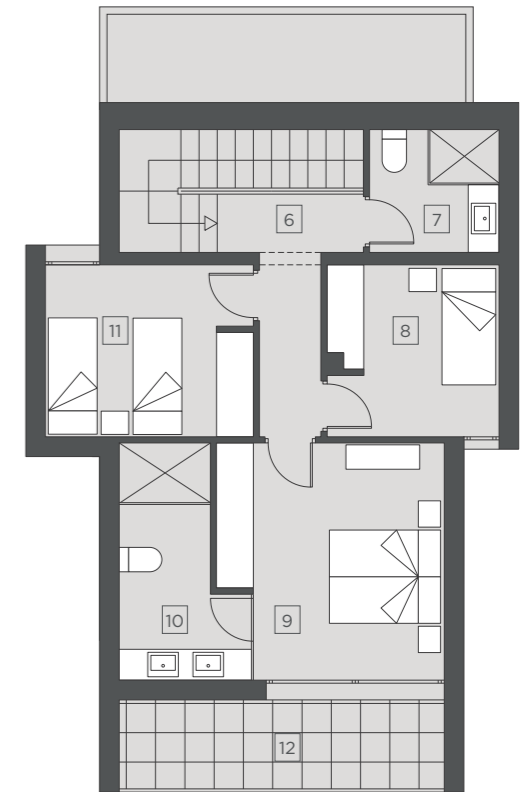
**PLOT 3B**

PLOT AREA	443,00 m <sup>2</sup>
PAVED AREAS	74,65 m <sup>2</sup>
PARKING AREA	35,78 m <sup>2</sup>
GARDEN AREAS	160,30m <sup>2</sup>
GROUND FLOOR	83,85 m <sup>2</sup>
FIRST FLOOR	74,01 m <sup>2</sup>
BBQ / PERGOLA	26,00 m <sup>2</sup>
SWIMMING POOL AREA	18,00 m <sup>2</sup>
POOL MEASUREMENTS	6x3 m



**GROUND FLOOR**

- 1 ENTRANCE HALL
- 2 UTILITY ROOM
- 3 VISITORS TOILET
- 4 WARDROBE
- 5 KITCHEN - LOUNGE - DINING AREA



**FIRST FLOOR**

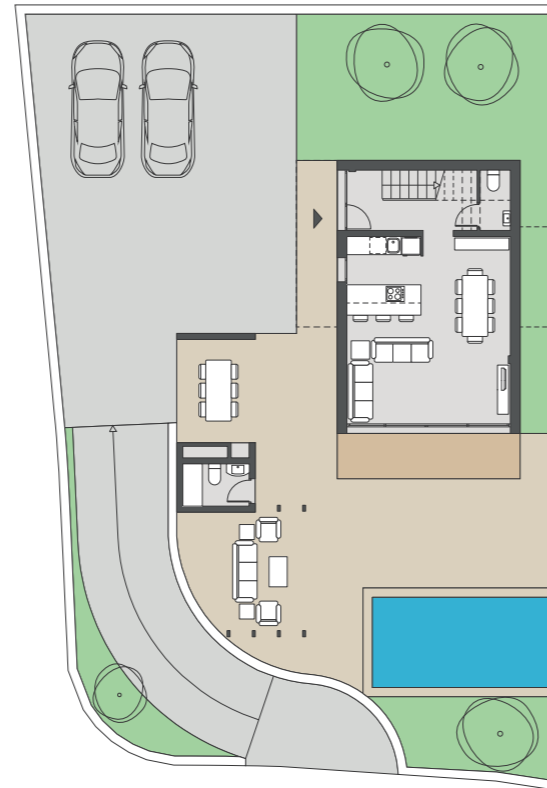
- 6 HALL
- 7 BATHROOM
- 8 BEDROOM 1
- 9 MAIN BEDROOM
- 10 MAIN BATHROOM
- 11 BEDROOM 2
- 12 TERRACE



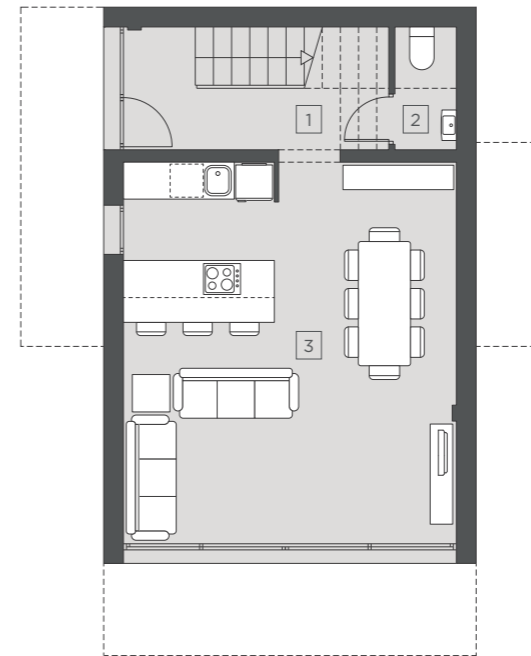


**PLOT 4A**

PLOT AREA	419,00 m <sup>2</sup>
PAVED AREAS	48,36 m <sup>2</sup>
PARKING AREA	110,99 m <sup>2</sup>
GARDEN AREAS	72,22 m <sup>2</sup>
GROUND FLOOR	74,99 m <sup>2</sup>
FIRST FLOOR	75,00 m <sup>2</sup>
BBQ / PERGOLA	26,00 m <sup>2</sup>
SWIMMING POOL AREA	18,00 m <sup>2</sup>
POOL MEASUREMENTS	6x3 m

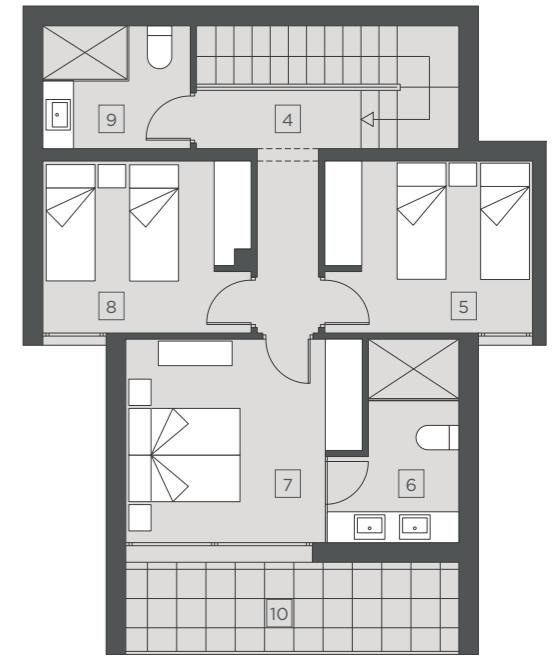


ZORZAL



**GROUND FLOOR**

- 1 ENTRANCE HALL
- 2 VISITORS TOILET
- 3 KITCHEN - LOUNGE - DINING AREA



**FIRST FLOOR**

- 4 HALL
- 5 BEDROOM 1
- 6 MAIN BATHROOM
- 7 MAIN BEDROOM
- 8 BEDROOM 2
- 9 BATHROOM
- 10 TERRACE

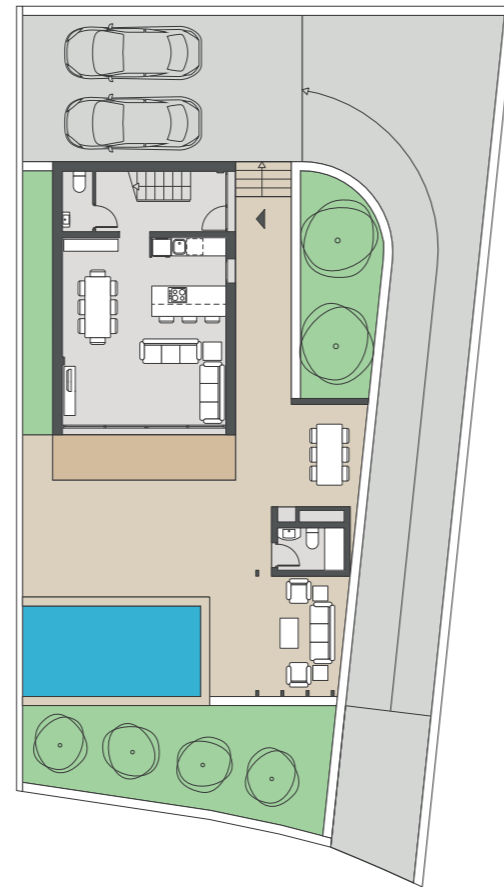




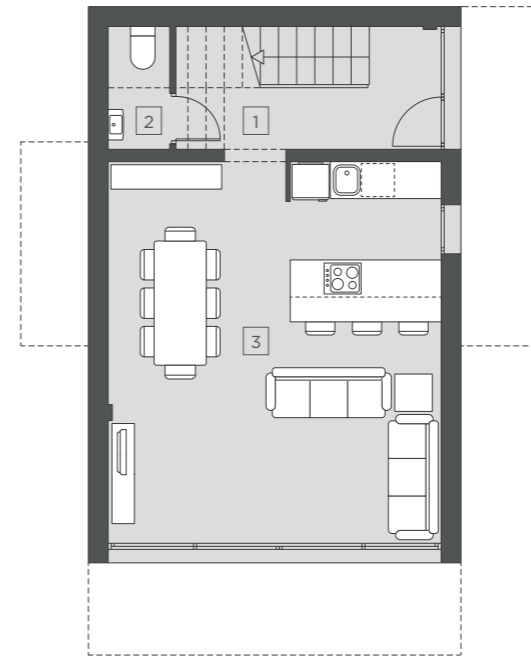


**PLOT 4B**

PLOT AREA	401,00 m <sup>2</sup>
PAVED AREAS	45,27 m <sup>2</sup>
PARKING AREA	62,09 m <sup>2</sup>
GARDEN AREAS	55,59 m <sup>2</sup>
GROUND FLOOR	74,99 m <sup>2</sup>
FIRST FLOOR	75,00 m <sup>2</sup>
BBQ / PERGOLA	26,00 m <sup>2</sup>
SWIMMING POOL AREA	18,00 m <sup>2</sup>
POOL MEASUREMENTS	6x3 m

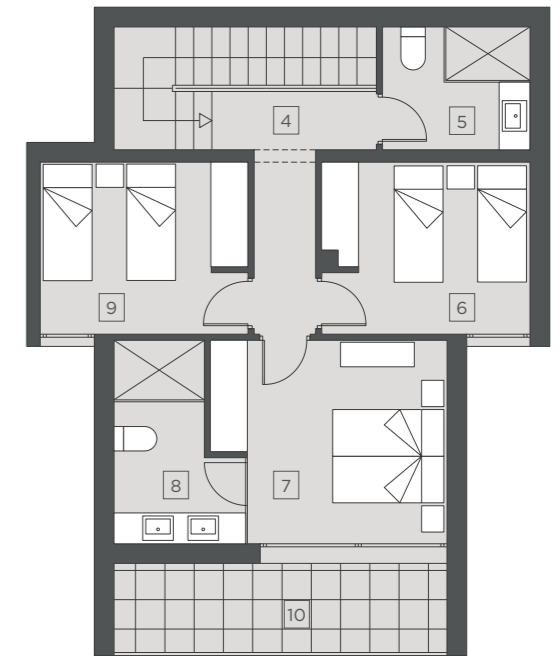


ZORZAL



**GROUND FLOOR**

- 1 ENTRANCE HALL
- 2 VISITORS TOILET
- 3 KITCHEN - LOUNGE - DINING AREA



**FIRST FLOOR**

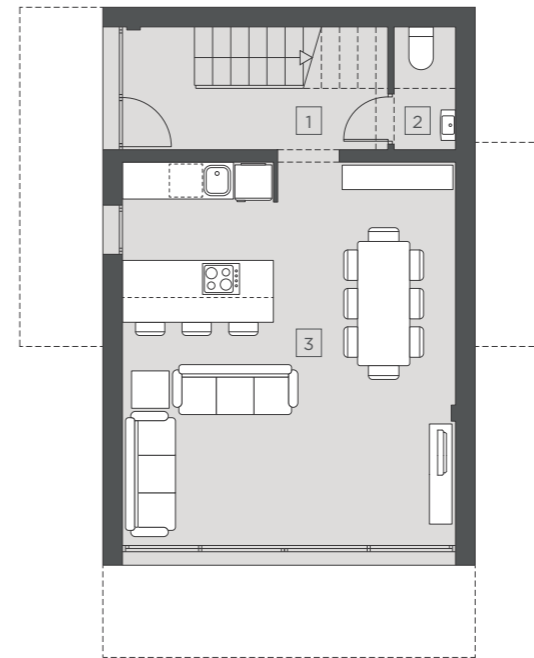
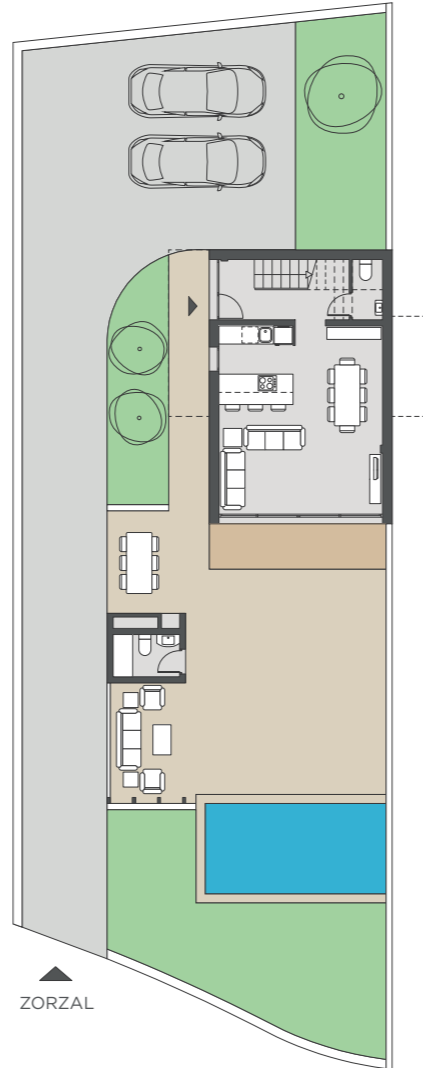
- 4 HALL
- 5 BATHROOM
- 6 BEDROOM 1
- 7 MAIN BEDROOM
- 8 MAIN BATHROOM
- 9 BEDROOM 2
- 10 TERRACE





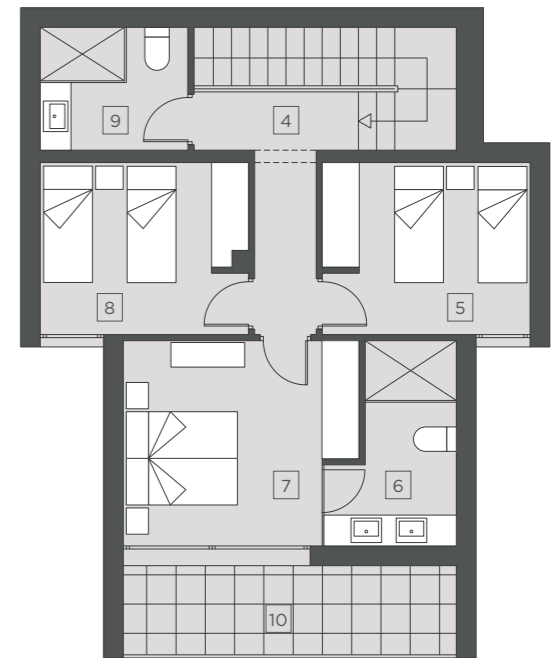
**PLOT 5A**

PLOT AREA	395,00 m <sup>2</sup>
PAVED AREAS	57,38 m <sup>2</sup>
PARKING AREA	64,01 m <sup>2</sup>
GARDEN AREAS	81,34 m <sup>2</sup>
GROUND FLOOR	74,76 m <sup>2</sup>
FIRST FLOOR	74,97 m <sup>2</sup>
BBQ / PERGOLA	26,00 m <sup>2</sup>
SWIMMING POOL AREA	18,00 m <sup>2</sup>
POOL MEASUREMENTS	6x3 m



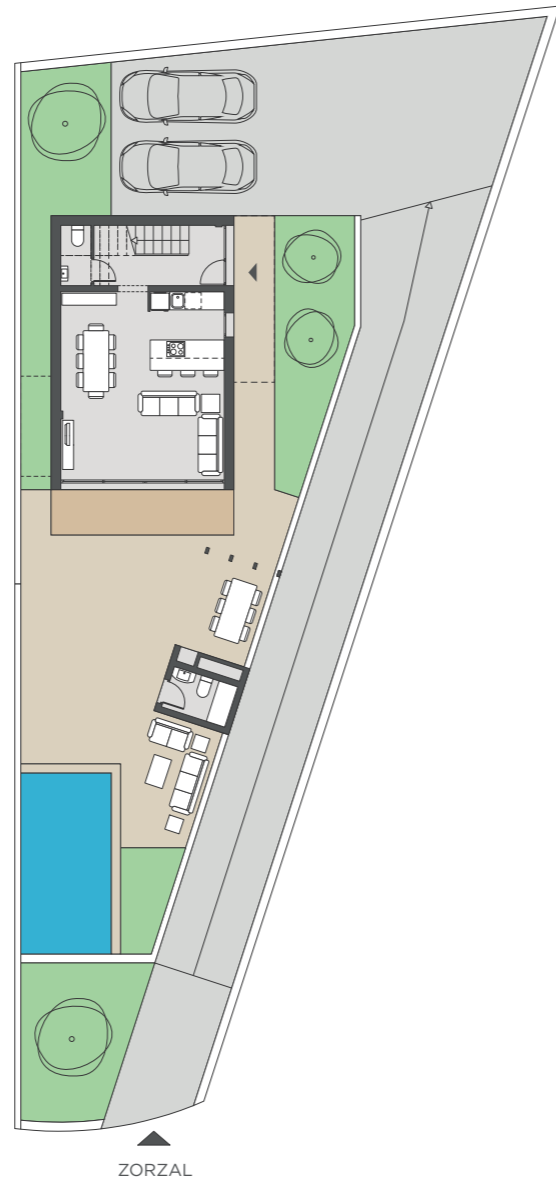
**GROUND FLOOR**

- 1 ENTRANCE HALL
- 2 VISITORS TOILET
- 3 KITCHEN - LOUNGE - DINING AREA



**FIRST FLOOR**

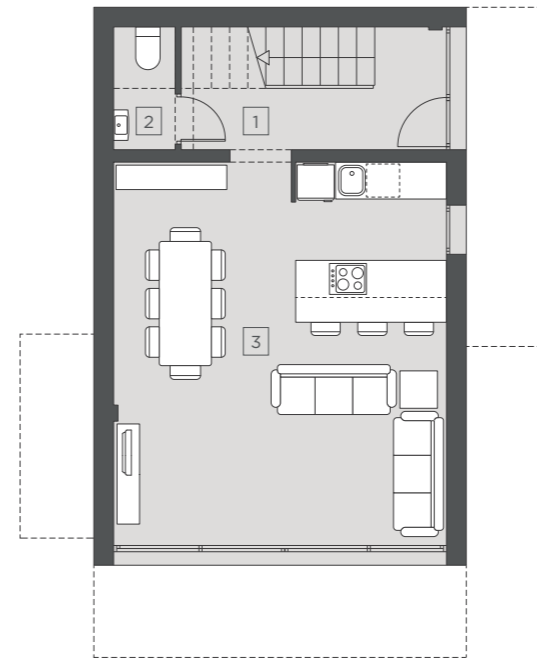
- 4 HALL
- 5 BEDROOM 1
- 6 MAIN BATHROOM
- 7 MAIN BEDROOM
- 8 BEDROOM 2
- 9 BATHROOM
- 10 TERRACE



**PLOT 5B**

PLOT AREA	424,00 m <sup>2</sup>
PAVED AREAS	52,85 m <sup>2</sup>
PARKING AREA	75,77 m <sup>2</sup>
GARDEN AREAS	48,86 m <sup>2</sup>
GROUND FLOOR	74,76 m <sup>2</sup>
FIRST FLOOR	74,97 m <sup>2</sup>
BBQ / PERGOLA	26,00 m <sup>2</sup>
SWIMMING POOL AREA	18,00 m <sup>2</sup>
POOL MEASUREMENTS	6x3 m

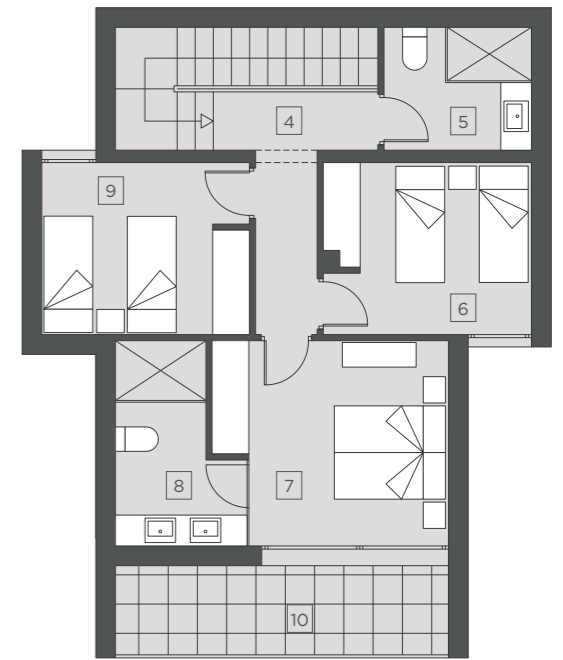
0 1 5 10m



**GROUND FLOOR**

- 1 ENTRANCE HALL
- 2 VISITORS TOILET
- 3 KITCHEN - LOUNGE - DINING AREA

0 1 5m



**FIRST FLOOR**

- 4 HALL
- 5 BATHROOM
- 6 BEDROOM 1
- 7 MAIN BEDROOM
- 8 MAIN BATHROOM
- 9 BEDROOM 2
- 10 TERRACE







**F HOUSE**  
*Brisas Del Portet*

This catalogue and images have been created for commercial purposes. The client is advised that the information and images contained in this website, and other information mediums, may suffer variations during the execution of the construction work, object of this real estate development, or contain items that may not match with the final product. Therefore, the information and images do not constitute, under any circumstances, to offer or have any contractual effect.